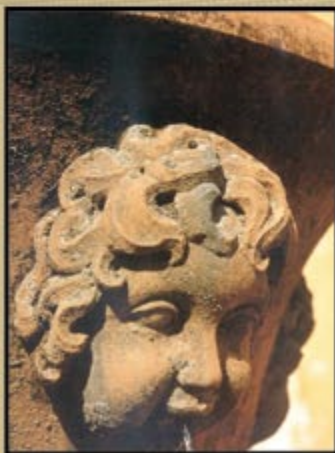



AFRICOTE[®]


Vol 1
 Est 1990

"Original coatings for Africa"



Special Effects



Interior Coatings



Exterior Coatings



Seamless Floor Screeds



MILK PAINT



Milk Paint is one of the most traditional finishes, popular in the 18th and 19th centuries for use on Shaker and country-style furniture as well as interior surfaces. Made from milk extracts mixed with pigment to produce subtle mellow colours, Milk Paints were traditionally used to protect and decorate wood. Milk Paint achieves a soft, mottled appearance, that ready-mixed modern paints can rarely match.



RUST PAINT

Rust Paint is designed to reproduce the typically oxidized, weather exposed pitted appearance of old abandoned steel objects. The main benefit of Rust Paint is that it can be applied to any alternative surface other than steel, e.g. concrete and cement pots, statues, water features, wooden benches or even feature wall panels. Rust Paint consists of and includes an undercoat and two oxidizing agents.

