

Product Information — Plant care Chrysal Leafshine (aerosol)

General

- For a natural shine to leaves of plants and cut foliage.
- Available in cans of 250 ml, 600 ml and 750 ml (promotion can).

Effects

- Adding an instant and natural gloss.
- Makes dust, spots, rust and lime spots invisible.
- Protects against extreme evaporation.
- Provides an even coating to the leaves without drops and spots.
- Will not clog the delicate pores of the leaves.
- Gloss can last for over a month.

Applications

- Ready to use shining for leaves of plants and cut foliage. Not suitable for flowers and plants with hairy or very soft leaves, such as Yucca, Oleander, Ferns, Succulents, Cacti and Euphorbia.
- For use by growers, interior landscapers, wholesalers, retailers and consumers.

Recommendations

- Store between 5°C and 25°C.
- Shelf life: 36 months, stored under the right conditions.
- Shake aerosol well before use.
- Spray at a distances of about 35 cm.
- Hold can upright while spraying.
- Avoid runoff into the hearts of plants.
- If wrapping or covering foliage, wait five minutes after spraying.
- Do not spray in full sunlight.
- Avoid spraying on furniture and floors (slippery when sprayed on floors)



Ficus microcarpa 'Moclame'

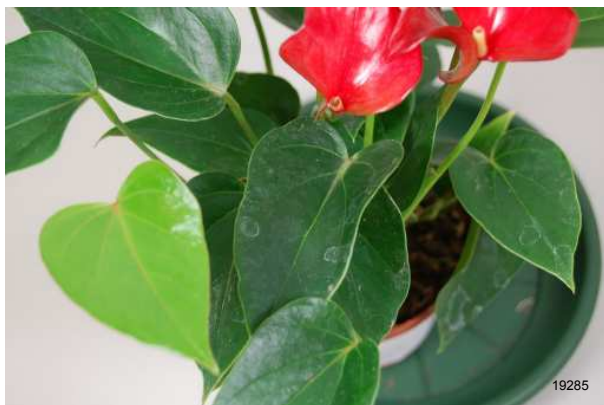


Treatment: none
Photo taken: day 12



Treatment: Chrysal Leafshine (aerosol)
Photo taken: day 12

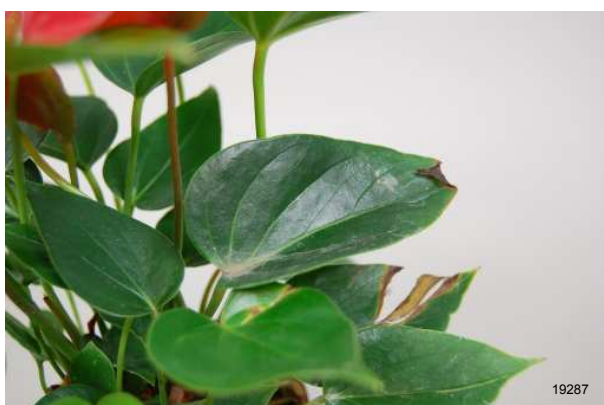
Anthurium 'nano red'



Treatment: none
Photo taken: day 12



Treatment: Chrysal Leafshine (aerosol)
Photo taken: day 12



Treatment: none
Photo taken: day 12



Treatment: Chrysal Leafshine (aerosol)
Photo taken: day 12