

CyScope® Malaria

Fluorescence Microscope for Malaria Diagnostics



Highlights
Application
Malaria Testing
Reagents
Order Information

Portable and Battery-Operated Fluorescence Microscope for Malaria Diagnostics

The Partec CyScope® is a new uniquely innovative microscope for fluorescence light detection employing incident UV light and transmitted light detection, simultaneously or in separate. It integrates the most recently available generation of powerful high-efficiency LED light sources with extremely long lifetime of several thousand of hours and highest efficiency as well as most sophisticated optics. For the first time, a fluorescence microscope is being offered battery-operated and mobile, designed for several hours of use completely independent from any regular power supply. The Partec CyScope® Malaria features excitation by a high power ultraviolet LED (365nm) for DNA specific staining kits.

For the CyScope® Malaria, a CCD camera upgrade is offered (optionally available) for taking images of the slide for further investigation by image analysis software on a Windows™ based PC. The CyScope® is developed and produced in Germany following the long German tradition in manufacturing highest quality techniques in optics and microscopy. With this dedicated reliable and rapid diagnostic technique, Partec Essential Healthcare is supporting the global fight against Malaria.

Highlights

- _ portable and battery-operated**
- _ ultracompact robust microscope design**
- _ light source alignment/optical adjustment not needed**
- _ Partec Rapid Malaria Test reagents do not require cold chain and cold storage**

- _ reliable performance also in most difficult infrastructural conditions
- _ dimensions [mm]: W 90/150 x H 345 x D 195, weight: 3.5 kg (binocular)
- _ dimensions [mm]: W 90/150 x H 295 x D 175, weight: 2.7 kg (monocular)
- _ high power ultraviolet LED (365nm) for incident light fluorescence excitation
- _ white light LED for transmitted light
- _ achromatic objectives: 20x, 40x, 100x - oil immersion
- _ eye piece: 10x wide-field
- _ camera connector (for CCD camera upgrade with USB connection to PC)
- _ power supply: built-in rechargeable batteries
- _ microprocessor controlled battery charger
- _ most easy and rapid Malaria diagnostics for all settings

Application

High Sensitivity Malaria Testing



Malaria infects more 300-500 million people per year and is responsible for far more than 1 million deaths per year, including one child every 30 seconds. Caused by the parasitic single-celled protozoon

Plasmodium, malaria is transmitted by tropical mosquitoes (Anopheles). The parasite reproduces in human red blood cells and results in significant destruction of erythrocytes. [Read more...](#)

Malaria Testing

Partec Rapid Malaria Test with CyScope®



Step 1

Take a drop of blood from a finger prick



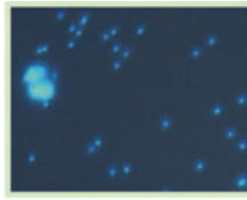
Step 2

Put the drop of blood onto the Partec Malaria Test Slide (delivered ready-prepared, already containing the necessary reagents dried-in for long and safe storage)



Step 3

Cover the slide with a cover glass and directly analyze the slide with the Partec CyScope®



Step 4

Picture shot from analysis with "Partec Rapid Malaria Test": Malaria parasites (small bright spots) besides two human white blood cells.

Reagents

Partec Rapid Malaria Test



Partec Rapid Malaria Test:

- _ easy-to-perform 1-step protocol for immediate analysis
- _ ready-prepared and ready-to-use test slides with all necessary reagents already dried onto the surface of the test slides
- _ long storage and shelf life

Order Information

Partec CyScope® Malaria - Instruments / Reagents / Options

CY-S-4005U	Partec CyScope® Plus Malaria, binocular, UV LED (365nm) excitation
CY-S-4001	Partec CyScope® Malaria, monocular, UV LED (365nm) excitation
CY-S-4018	USB CCD Colour Camera Upgrade for CyScope® Plus Malaria
CY-S-4011	USB CCD Colour Camera Upgrade for CyScope® Malaria
CY-S-4024	Upgrade for 455nm Royal Blue LED Excitation (e.g. for TB Diagnosis)
05-8951	Partec Rapid Malaria Test Kit (200 Tests)