

# UNICEMTEX

& INTRODUCING  
**FLOATEX**  
DISTRESSED FLOOR FINISHES

RUSTIC INTERIOR / EXTERIOR WALL COATING

"CABANGA CONFERENCE CENTRE"



**UNION  
TILES**  
UNICEMTEX

- Suitable for:
- Homes/Townhouses
  - Boundary Walls
  - Conference Centres
  - Warehouses
  - Game Lodges

For smooth plaster finishes request our UNIKEMTEX "PLASTER" available in the same 20 colours and specially formulated for this purpose



On exterior walls, semi circular brush strokes using a specially blended Fawn UNIKEMTEX coating enhances the warm earthy tones.



UNIKEMTEX is a weather resistant coating ideal for boundary walls of townhouse complexes and cluster homes. Its cost effectiveness, compared to paint, and durability, make it an obvious choice for rustic textured finishes.



Cream UNIKEMTEX applied using circular strokes on the interior walls of the Cabanga Conference Centre promoted the ethnic theme.



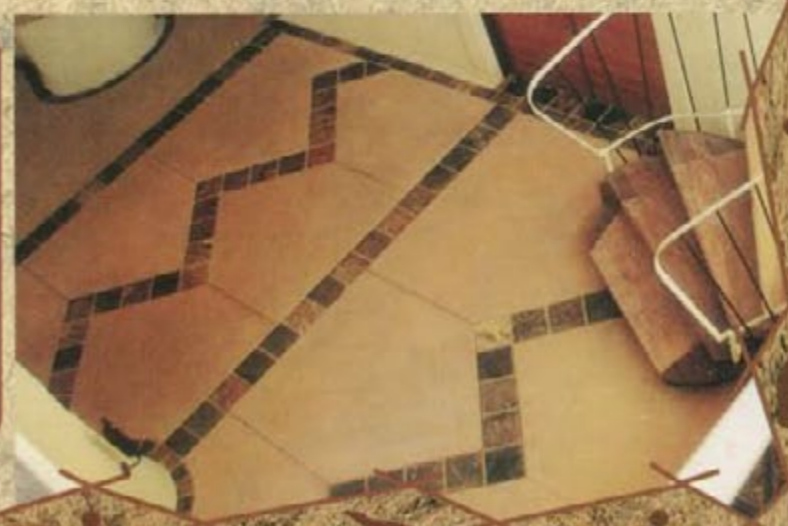
**TEXTURES:**  
UNIKEMTEX allows for each individual's artistic flare. Should one wish to texture a wall, circular, dabbing or vertical even brush strokes can be used. Alternatively a Tyrolean plastering applicator leaves a fine splash effect for a rounded more textured finish. It is recommended for optimum coverage, to apply the first coat with vertical brush strokes and then use the desired texturing process on the second coat.

**FLOATEX**  
DISTRESSED FLOOR FINISHES



FLOATEX is a coloured range of skin shields, trowelled over fresh uncured concrete slabs or screeds. The final finish seen here creates slight colour tone intensities for an aged worn floor appearance

Nature's own time aged materials such as slate, marble, sandstone and granite tiles are ideal border accessories to compliment the distressed floor finish achieved by FLOATEX. Available in 7 standard earthy colours as indicated by the "O" dot on the colour chart attached.



## WEATHER RESISTANT UNICEMTEX WALL COATING

### FEATURES

UNICEMTEX IS A WEATHER RESISTANT COST EFFECTIVE RUSTIC CEMENTITIOUS WALL COATING SUITABLE FOR INTERIOR AND EXTERIOR USE. UNICEMTEX IS DESIGNED TO BE APPLIED DIRECT TO BRICK WORK PRIOR TO PLASTERING, ELIMINATING THE DOUBLE COST OF PLASTERING AND PAINTING, IN ONE SIMPLE OPERATION FOR A RUSTIC HARDWEARING APPEARANCE. THERE ARE 20 STANDARD COLOURS AND IT IS BEST APPLIED WITH A BLOCK BRUSH DIRECT TO SURFACES OF RAW CLAY OR CEMENT BRICKS, PLASTERED WALLS ROUGH CONCRETE PRECAST WALLS OR PREVIOUSLY CURED CEMENT WASH. (SPECIALLY BLENDED COLOURS TO THE CLIENTS COLOUR REQUIREMENTS, CAN ALSO BE MANUFACTURED.) THROUGH THE USE OF DIFFERENT BLOCK BRUSH STROKES SEVERAL RUSTIC TEXTURES CAN BE ACHIEVED DURING APPLICATION OF THE SECOND COAT. THE FIRST COAT SHOULD BE APPLIED LIBERALLY WITH EVEN BLOCK BRUSH STROKES.

### TEXTURES



TEXTURES CAN BE CREATED USING CIRCULAR BRUSH STROKES, VERTICAL BRUSH STROKES, DAB BRUSH APPLICATION OR A TYROLEAN PLASTER MACHINE.

### APPLICATION AND MIXING:



UNICEMTEX IS SUPPLIED AS A DRY POWDER IN 40kg PLASTIC BAGS. WATER IS TO BE ADDED IN A RATIO OF APPROXIMATELY 2 PARTS UNICEMTEX TO 1 PART WATER.

### USE WITHIN AN HOUR



THEN MIX TO A CREAMY PASTE IN A SUITABLE CONTAINER. THE PAINT SHOULD BE MIXED FREQUENTLY AND MUST BE USED WITHIN 1 HOUR OF ADDING THE WATER.

THE SURFACE MUST BE CLEAN AND DAMPENED PRIOR TO APPLICATION.

### 1st COAT



UNICEMTEX CAN THEN BE APPLIED LIBERALLY, USING A BLOCK BRUSH, FINISHING WITH VERTICAL BRUSH STROKES FOR THE FIRST COAT. THE FOLLOWING DAY AFTER APPLICATION, THE PAINTED SURFACE SHOULD BE THOROUGHLY DAMPENED TO ALLOW FOR PROPER CURING. THE SECOND COAT CAN THEN BE APPLIED USING BRUSH STROKES THAT WILL GIVE THE DESIRED TEXTURE. THE SECOND COAT MUST ALSO BE DAMPENED WITH WATER FOR EFFECTIVE CURING. THE FOLLOWING DAY AFTER APPLICATION.

### COVERAGE:

THE PRODUCT COVERS APPROXIMATELY 20m<sup>2</sup> PER 40kg OR 10m<sup>2</sup> WITH TWO COATS (DEPENDENT ON SURFACE)

### SHELF LIFE:

UNICEMTEX SHOULD BE STORED IN A DRY AREA OFF THE FLOOR FOR NO LONGER THAN 2 MONTHS

### DO NOT APPLY IN



**WARNING:**  
DO NOT APPLY UNICEMTEX SHOULD BAD WEATHER BE EXPECTED THE SAME DAY OR IF THERE IS A POSSIBILITY OF TEMPERATURES BELOW 5°C DO NOT APPLY TO PVA OR ENAMEL PAINTED WALLS

BAD WEATHER EXTREME COLD

**UNICEMTEX HAS PASSED A 24 HOUR RAIN PENETRATION TEST AS DETAILED BY THE SABS.**

(TESTED IN ACCORDANCE WITH KK17.1 SABS 0400) (RESULTS AVAILABLE ON REQUEST)

Colours portrayed are as accurate as printing allows (Please request sample before ordering/specifying)

Clyde Printers



### GENERAL INFORMATION AND MAINTENANCE OF UNICEMTEX

Unicemtex requires minimal maintenance, is extremely durable and, if correctly applied, will outlast any paint. To clean a Unicemtex painted surface, hose with water and, if necessary, any stubborn marks can be scrubbed with a suitable broom and soap, such as S.Q.T. cleaner.

Should a glossy texture be required, the Unicemtex painted surface can be sealed with Union Sealer. In such a case re-sealing may be necessary every few years, depending on exposure to sunlight.

Efflorescence on the painted exterior walls exposed to extensive rain may become visible in the form of a white powdery mark. Efflorescence is a natural phenomenon with cement based products and is a chemical reaction initiated by water/moisture. However, due to the rustic varied nature of Unicemtex, this slight colour variance is often unnoticed or adds to the character of the painted wall and any visible efflorescence, fades after ± 12 months, or can be cleaned with a mild solution of spirits of salts.

## FLOATEX DISTRESSED FLOOR FINISHES

### GENERAL TECHNICAL INFORMATION

Floatex achieves a natural aged marble finish in the selected colour, once dry, leaving a hard wearing low maintenance floor.

Floatex is supplied in a dry powder in 40 kg bags and is available in seven standard earthy colours noted by the mark on the above colour chart, however specially requested colours can be made to order.

Floatex is applied by evenly dusting the product at a rate of 8-10 kg/m<sup>2</sup> and then trowelling it into the wet uncured concrete slab or screed to a smooth finish.

The fresh trowelled floor must then be cured with a clear curing membrane ideally Floatex clear, or covered with a large plastic sheet the evening of application.

Once the floor is dry after ± 14 days, two coats of a surface sealer can be applied namely S.Q.T. Sealer and then if a glossy texture is required two coats of the S.Q.T. Dresser.

For more detailed instructions about the application procedure and concrete mixture formulations into which the product is to be trowelled, please request the :Floatex: application data sheet from Union Tiles.



**UNION  
TILES  
UNICEMTEX**

**UNION FLOORING TILES (PTY) LTD.**

P.O. BOX 84, BEDFORDVIEW 2008

TEL: (011) 455-4220 (23 LINES) FAX: (011) 455-5395

SHOWROOM: CNR. NORTH REEF ROAD / A.G. DE WITT DRIVE,

BEDFORDVIEW EAST, SOUTH AFRICA

e-mail: uniontil@cis.co.za web site: www.uniontiles.co.za